

*Find yourself next to the water.*



City of Ashland, Wisconsin  
601 Main Street West Ashland, WI 54806 www.coawi.org

## **HISTORIC PRESERVATION COMMISSION MEETING AGENDA**

March 9<sup>th</sup>, 2026 at 4:30PM in the 2<sup>nd</sup> Floor Conference Room at 601 Main St W, Ashland, WI 54806 and via Go To Meetings | The meeting can be joined in person or by using a computer, smartphone or tablet at.

<https://meet.goto.com/978070741>

The meeting can also be joined by phone at  
1 877 309 2073 using Access Code: 978-070-741

### **AGENDA**

1. Call to Order and Roll Call
2. Approval of the Agenda
3. Consent Agenda
  - a. Approval of minutes from the Dec 8<sup>th</sup>, 2025 Historic Preservation Commission meeting.
4. Identify potential conflicts of interest
5. Public Comment (non-agenda items)
6. Action Items
7. Discussion Items:
  - a. Update on Siding on West Elevation at 407 West Main – West Second Street Historic District
  - b. Update on Properties Recommended for Local Historic Nominations – Miscellaneous recommendations
  - c. Update on Vaughn Public Library
  - d. Update 909 Chapple Avenue – HP Brief #16
  - e. Historic Chapple Avenue Pavement/Tree Replacement Project
  - f. Discussion on Miscellaneous HPC Items
8. Announcement/Reports/Comments/Questions
9. Adjournment

*It is possible that a quorum of members of other governmental bodies of the municipality may be in attendance at the above stated meeting to gather information or speak about a subject, over which they have decision-making responsibility. Any governmental body at the above stated meeting will take no action other than the governmental body specifically referred to above in this notice. The City of Ashland does not discriminate on the basis of sex, race, creed, color, national origin, sexual orientation, age or disability in employment or provision of services, programs or activities. NOTE: Upon reasonable notice, the City of Ashland will accommodate the needs of disabled individuals through auxiliary aids or services. For additional information or to request this service, contact the Planning & Zoning Dept. at (715) 682-7041.*

*Find yourself next to the water.*



City of Ashland, Wisconsin  
601 Main Street West Ashland, WI 54806 www.coawi.org

## **HISTORIC PRESERVATION COMMISSION MEETING MINUTES**

December 8<sup>th</sup>, 2025 at 4:30PM in the 2<sup>nd</sup> Floor Conference Room at 601 Main St W, Ashland, WI 54806 and via Go To Meetings | The meeting can be joined in person or by using a computer, smartphone or tablet at.

<https://meet.goto.com/978070741>

The meeting can also be joined by phone at  
1 877 309 2073 using Access Code: 978-070-741

**Present:** Steve Schraufnagel, Al Smiles, Kristen Huset, Magge Ericson (late), Jeffrey Muse (online), Terri Erickson (Assistant Planner)

**Absent:** Nancy Szyndor

### **AGENDA**

1. Call to Order and Roll Call  
Schraufnagel called the meeting to order at 4:31 pm.
2. Approval of the Agenda  
Discussion: Agenda item 7e was moved to be after item 7h. Schraufnagel asked for agenda approval. Smiles moved, Muse seconded. Motion carried 4-0.
3. Consent Agenda
  - a. Approval of minutes from the August 25<sup>th</sup>, 2025 HPC meeting. Schraufnagel asked for approval of the minutes. Muse moved and Smiles seconded. Motion carried 4-0.
4. Identify potential conflicts of interest  
None.
5. Public Comment (non-agenda items)  
None.
6. Action Items  
None.
7. Discussion Items:
  - a. Siding on West Elevation at 407 West Main – West Second Street Historic District  
  
Doty Mihalek (owner) and Tony Dalbec (contractor) were present for discussion item. Steve S. explained that the purpose of the project is to protect the roof of the adjacent building from falling brick from the higher wall, per ordinance. The owner chose to cover the wall with an LP

lap smart siding with a smooth finish over an insulated panel and furring strips at 16" on center. There are several cases like this in the city and action was taken in this case due to a complaint from the neighbor. Terri explained this was not required to be reviewed or approved by the HPC, rather a courtesy to get the commission's opinion. The building itself is not a listed historic designation but is in the West 2<sup>nd</sup> Street Historic District which is on the state and national register. Tony displayed samples he brought for the lap siding color selection. Doty expressed her preferred selections. Steve S. noted that they initially intended to install a metal product and the planning department would not allow this. Doty preferred the dark graphite color or onyx to match the existing black metal on the facade. No one felt strongly that any of the proposed colors were distasteful. The removal of the coping was discussed as well as the quoining detail on the outside corner. The siding and trim should preferably be set back from the face of the façade so the corner detailing is left exposed. (Magge arrived 4:50 pm) The committee agreed that the Bordeaux sample, the color that most closely matched the brick, is the preferred option. Al made a motion to recommend the Bordeaux color with a darker trim, onyx or charcoal, on behalf of the committee with the understanding that it is just a recommendation, the owner may choose whichever color they prefer. Second by Maggie. Motion carried 5-0. The applicants were thanked for attending the meeting and bringing samples to show.

Steve noted that the city administration had requested the siding have a smooth finish in lieu of textured. It was noted that there are advantages to going with the textured as it hides imperfections better and doesn't cause as much glare, but that option was frowned upon. The committee questioned why this was and did not know of a historic context for this. Steve S. thought it would be worth asking Tracy Schnell about this to have an understanding why this is more historically compatible. He will touch base with her to gain more insight on this.

b. Update on Properties Recommended for Local Historic Nominations – Miscellaneous recommendations

Terri noted the 3204 N Lakeshore Drive property was discussed at the last meeting and Steve S. was going to get in touch with the owner to gauge interest in the property being listed. Steve responded he knows Dan is interested. He will follow up with him to get something in writing.

Steve brought up the shrine at St. Agnes cemetery while Jeff was still there. He photographed it and sent to Tracey Schnell. It is currently forty-five years old. When it turns fifty, it may have potential to be listed. Not so with the Agnes Cemetery unless significant founders are buried there. Mount Hope across the street would be more favorable. Several founder fathers are buried there.

c. Update on Vaughn Public Library and 909 Chapple Avenue

Steve S. gave an update on the progress at the Library. It is to be turned over in January, February first, at latest. Electrical work is behind schedule.

Not much going on at 909 Chapple.

d. Historic Chapple Avenue Pavement/Tree Replacement Project

Steve S. was in touch with Madison (Public Works). Project on schedule. Tree planting to take place next Spring. Second layer pavement around that time, too. (Moved to end)

e. Proposed Mural at 421 Main Street West

Terri gave a short description of the project. Owners are looking to install a mural of the East side of the building. Public art permit – requires a review by the plan commission, not HPC. For discussion only and feedback by HPC. Victoria Gokee gave a brief overview on their plans for the building - a tattoo parlor in the north side and in the front, an indigenous trading post. The mural will represent their culture, tribe and history of the sport of Lacrosse. They are consulting with a friend from Minneapolis for the mural. Considering base panels, still under consultation with the artist. Steve noted MDO is often used; waterproof - 4x8 sheets. A motion was made by Jeff to recommend strong support for the planning and implementation of this mural. Second by Kristen. Terri noted she can bring this back to the HPC for further notification once the project is further along. Carried 5-0.

f. Radio Station Antennae at 415 Main St West

Kevin Porter (Porter Realty) has granted permission to the applicant to locate the proposed radio tower (would look similar to the photo provided by the applicant of the former Northland campus building) on his building (415 Main St W). The radio station is located in 417B Main Street West. For non-profit community radio station - low power similar to prior Northland College station. Option A: tether to brick on sidewall - must be 25 feet or more above roof line. Option B: Anchor to ground behind pastry shop and bracket to building (triangular type of structure). This requires no guywires from roof. Looking for opinions. Direct cable from studio is easiest - remote location is much more complicated. Working with engineering firms for attachment design. Could explore on ground location to north side of building if preferred to behind the 417 building. The tower would require an 18" concrete base. No interference to neighbors, follows FCC guidelines. All scenarios require bottom of antennae to be 21 feet above roofline for a total of 25 feet. This would come to about 80 feet above the ground. All professionally engineered. Downtown location: owner providing free rent for period of time. HPC views: 1) We need to be careful about how we move ahead with support on these types of projects and how they may diminish or take away from the historic beauty of our downtown. 2) After a week or so of it being installed, people would no longer notice it. 3) As long as it is properly engineered and safe for people below, do not see issues. 4) Located back or side of building seems reasonable - would not see it easily from main street. A motion was made by Al to accept the proposed antenna with noted comments taken into consideration with best option for side of building. Second by Kristen. Carried 5-0.

g. Ordinance Revisions Regarding Metal Siding

Steve S. noted that he went through all the attachments and was in agreement and in favor of the proposed ordinance revisions. People need more direction and further guidance in the ordinance is helpful. What is the timeframe for our historic district that makes certain design elements significant? Similar to why the boat houses are considered historic. Terri noted the plan commission feels there needs to be more community input. It has been a challenge to create language that specifies good quality design methods while disallowing the money saving methods across districts and various applications. Proposed updated language is very

helpful even if it may not be perfect. There is a different between residential and commercial applications. Language referring to percentages of different materials and proportions is reasonable in larger buildings with more facade. There was a motion to accept the ordinance as is by Al and a second by Maggie. This would not eliminate steel siding meant to be used as siding. This should be clear in the language.

h. Discussion on Miscellaneous HPC Items

No. 7 Fifield: Permit is possibly expired. Working on painting house for many year; house has several different colors.

h. Announcement/Reports/Comments/Questions  
None

i. Adjournment  
Al moved and Magge seconded. Meeting adjourned at 6:04 pm. The next meeting will be Monday, March 9<sup>th</sup> at 4:30 PM.

Recorded by:  
Terri Erickson  
Assistant Planner

# 16 PRESERVATION BRIEFS

## The Use of Substitute Materials on Historic Building Exteriors

John Sandor, David Trayte, and Amy Elizabeth Uebel



National Park Service  
U.S. Department of the Interior  
Technical Preservation Services

The *Secretary of the Interior's Standards for Rehabilitation* generally require that deteriorated distinctive architectural features of a historic property be repaired rather than replaced. Standard 6 of the *Standards for Rehabilitation* further states that when replacement of a distinctive feature is necessary, the new feature must “match the old in composition, design, color, texture, and other visual properties, and, *where possible, materials*” (emphasis added). While the use of matching materials to replace historic ones is always preferred under the *Standards for Rehabilitation*, the Standards also purposely recognize that flexibility may sometimes be needed when it comes to new and replacement materials as part of a historic rehabilitation project. Substitute materials that closely match the visual and physical properties of historic materials can be successfully used on many rehabilitation projects in ways that are consistent with the Standards.

The flexibility inherent in the *Standards for Rehabilitation* must always be balanced with the preservation of the historic character and the historic integrity of a building, of which historic materials are an important aspect. Any replacement work reduces the historic integrity of a building to some degree, which can undermine the historic character of the property over time. With limited exceptions, replacement should only be considered when damage or deterioration is too severe to make repair feasible. When needed replacement is made with a material that matches the historic material, the impact on integrity can be minimal, especially when only a small amount of new material is needed. When a substitute material is used for the replacement, the loss in integrity can sometimes, although not always, be greater than that of a matching material. Also, whether historic or substitute material, there is a point where the amount of replacement can become excessive and the building's historic integrity is diminished to an unacceptable degree, regardless of the material used—that is, a loss of authenticity and the physical features and characteristics closely associated with the property's historic significance.

The term *substitute materials* is used to describe building materials that have the potential to match the appearance, physical properties, and related attributes of historic materials well enough to make them alternatives for use in current preservation practice when historic materials require replacement.

Compelling reasons to use a substitute material instead of the historic material include the unavailability or poor performance of the historic material, or environmental pressures or code-driven requirements that necessitate a change in material. When using a substitute material for replacement it is critical that it match the historic material in all of its visual and physical properties to preserve the historic character of the building and minimize the impact on its integrity.

Substitute materials can be cost-effective, permit the accurate visual duplication of historic materials, and provide improved durability. While the behavior of traditional, historic materials is generally well understood, the behavior of newer materials can be less established and sometimes less predictable. Substitute materials are most successful when the properties of both the original material and the substitute are thoroughly understood by all those involved in the design and construction process. The architect must be adept at the selection of substitute materials and their incorporation into architectural plans and specifications. The contractor or tradesperson in the field must also be experienced with their use.

This Preservation Brief provides general guidance on the use of substitute materials as replacement materials for distinctive features on the exterior of historic buildings. Due to the ever-evolving product market for construction materials, this Brief does not provide specifications for substitute materials. This guidance should be used in conjunction with qualified professionals who are knowledgeable in current construction and historic preservation practices.

This Brief includes a discussion of the appropriate use of substitute materials and provides a path for decision-making in their use. In considering the use of substitute materials, such issues as the deterioration or failure of the historic building component and material must be understood. The existing component's physical and visual properties, profile, surface texture, dimensions, and performance should be identified to establish the basis for evaluating a possible replacement material. The physical and visual properties of the various substitute materials available should also be assessed and compared to the original material for their physical and visual compatibility. Lastly, the suitability of a given substitute replacement material should be determined based on how well the material matches both the physical and visual properties of the existing material as well as any specific performance or application needs. The Brief's descriptions of common substitute materials are not meant to be comprehensive, and, as the performance history of newer materials continues to grow and new materials are developed, available options will change, and our understanding of current material performance will continue to evolve.

## Historical Use of Substitute Materials

The tradition of using affordable and common materials in imitation of more expensive and less available materials is a long one. At Mount Vernon, for example, George Washington used wood painted with sand-impregnated paint to imitate rusticated stone. This technique, along with scoring stucco into block patterns, was common in Colonial America to imitate stone.

Nineteenth-century technology made a variety of materials readily available and widely used that were not only able to imitate traditional materials but were also cheaper to fabricate and easier to use. Traditionally, carved stone units were individually worked. Molded or cast materials greatly increased efficiency in creating repetitive elements. Cement-based products such as cast stone could provide convincing imitations of natural stone with carefully chosen aggregates and cements and was typically a commercially manufactured product. It could be tooled like natural stone, though that could reduce much of the cost advantage. These carefully-crafted cementitious products were widely used as trim elements for masonry structures or as the face material for an entire building. At the other end of the spectrum, mail-order catalogs provided a wide variety of forms for molding concrete that were merely evocative of natural stone and did little to match its appearance. Concrete masonry units could be fabricated locally and on site, avoiding expensive quarrying and shipping costs.

Offering similar efficiencies as cast stone for reproducing repetitive and even complex decorative shapes, terra cotta could mimic the surface characteristics of stone with various textures and glazes. It was popular in the late nine-

teenth and early twentieth centuries for details on stone or brick buildings as well as for the entire skin of large and elaborately detailed buildings.

Cast iron was also used to imitate stone, often with very decorative profiles, for a variety of architectural features ranging from window hoods to columns, piers, balustrades, and even whole façades. Cast iron offered its own set of efficiencies including cost, fabrication time, and weight, but required a painted finish.

While cast stone, terra cotta, and cast iron offered efficiencies over quarried and, particularly, carved stone, they were not cheap or impermanent materials. Less costly, but also less durable, stamped or brake-formed sheet metal, typically galvanized, could also be used instead of masonry for cornices, window hoods, roofing tiles, and even entire building façades.

## Substitute Materials and Applying the Standards for Rehabilitation

The *Standards for Rehabilitation* are focused on preserving the important and distinctive character-defining features of a historic property (Standards 2 and 6), and they are to be applied in a reasonable manner, taking into account economic and technical feasibility ([36 CFR 67.7](#) and [36 CFR 68](#)). The Standards have an inherent flexibility that facilitates their application to diverse projects, historic properties, and conditions. They are to be applied on a "cumulative-effect" basis, when the overall effect of all work in the context of the specific conditions of the property and the project is consistent with the property's historic character.

The *Standards for Rehabilitation* require that the replacement of a distinctive feature match the old in physical and visual properties. While the use of matching materials is always preferred, the Standards purposely allow for the use of substitute materials when the use of original materials is not reasonably possible, such as in consideration of economic and technical feasibility or in new construction. They also provide additional flexibility in the treatment of secondary, less distinctive features that are less important in defining the historic character of the property. The *Standards for Rehabilitation* recognize that flexibility is appropriate to facilitate "a compatible use for a property ... while preserving those portions or features which convey its historical, cultural, or architectural values" (definition of "Rehabilitation," [36 CFR 67.2\(b\)](#)).

## Examples of Historical Use of Substitute Materials



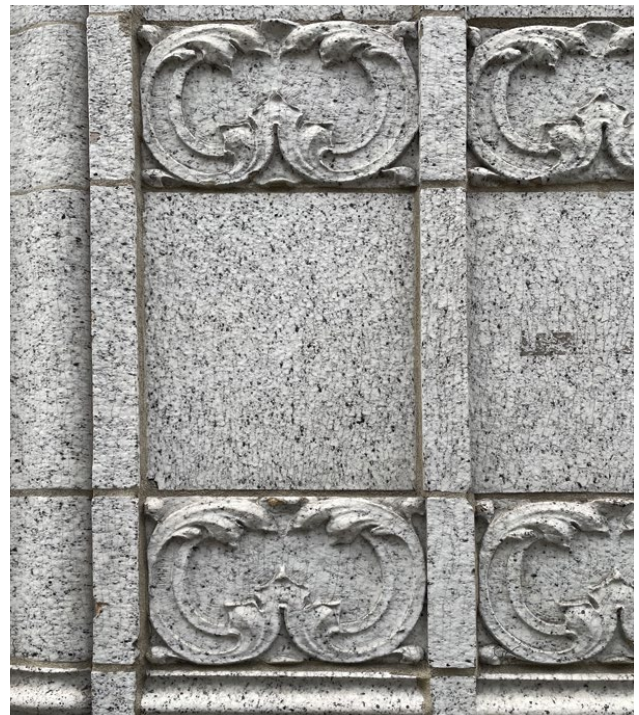
*Figure 2a. Casting concrete blocks to mimic quarried stone was a popular late 19th- to mid 20th-century technique. Concrete masonry units could be completed by local craftsman, saving time and shipping costs. Photo: John Sandor, NPS.*



*Figure 2b: The 19th century also produced a variety of metal products used to imitate other materials. Across the country, cast iron was used in storefronts to imitate stone. Photo: John Sandor, NPS.*



*Figure 2c: Stucco has been used to imitate a number of building materials for many centuries. Seen here, stucco was applied to a brick structure and scored to represent a stone façade. Photo: John Sandor, NPS.*



*Figure 2d: Terra cotta gained popularity in the late 19th century as a cheap and lightweight alternative to stone. Glazing techniques allowed the blocks to imitate a variety of natural stone materials. Photo: John Sandor, NPS.*

These examples of one material used to imitate another, more often in initial construction than for later repair and replacement purposes, are referred to as *imitative materials* in the *Guidelines for Preserving, Rehabilitating, Restoring & Reconstructing Historic Buildings*, updated in 2017, that accompany the *Secretary of the Interior's Standards for the Treatment of Historic Properties*. These imitative materials, while evoking other materials, usually had distinctive qualities of their own and were not always a very close match in appearance to the historic material they were meant to imitate.

Many of the traditional materials discussed above are still available and used to replace damaged or missing original features, both to replace matching historic materials and sometimes as substitute materials. Because of their extensive use over time and their known physical and chemical properties, cast stone, cast iron, and terra cotta are well understood substitute materials. This continued usage and familiarity means their installation requirements and service life are well established, which in turn makes it easier to determine when and how to use these traditional materials as substitutes for a deteriorated material. However, innovation in replacement materials continues, and new products (many of them consisting of synthetic materials) are continually introduced. These non-traditional products are an increasing part of both the new construction and rehabilitation industries. Some materials, like glass fiber reinforced polymers, glass fiber reinforced concrete, or fiber cement, have been in use long enough for an accurate prediction of their service life and performance. Other newer, non-traditional materials may be too new to have established performance records, thus, understanding their material properties is critical, and their use should be approached with more caution.

## When to Consider Using Substitute Materials in Preservation Projects

According to the *Standards for Rehabilitation*, deterioration should generally be addressed through repair if in repairable condition. Repair can entail a variety of treatments that retain the unit of building material and remove and patch or replace only the damaged portion. This approach can be done with traditional methods and materials such as a dutchman, where like-kind material is precisely inserted into wood or stone, or it may employ other materials such as epoxies for wood repair or cementitious compounds for masonry. As long as the repair methods are sound and do not damage or accelerate the deterioration of the historic material, repairs are generally preferable to replacement of an entire element. More complex manufactured products, typical of more recent historic materials (as well as a lot of modern building materials generally), may be more difficult to repair, if they can be repaired at all.

There are situations, however, when the level of deterioration makes localized repairs infeasible and entire fea-



Figure 3: Incremental repair is best done using in-kind material to minimize differences in the performance characteristics that could negatively affect the overall assembly. Photo: NPS.

tures or units of historic material must be replaced. While achieving an effective match of all of the visual qualities of a material can be challenging, even when replacement is in kind, it can be even more challenging when the replacement is a substitute material. A good visual match is not the only consideration when a substitute material is to be used for incremental replacement within a larger assembly of historic material. When an individual siding board or a single block of ashlar is being replaced, it is usually best achieved with the original material. Introduction of a different material into an intact assembly requires that its inherent properties, such as expansion and contraction, moisture resistance, or permeability, be thoroughly considered relative to those of the surrounding historic materials to avoid causing damage.

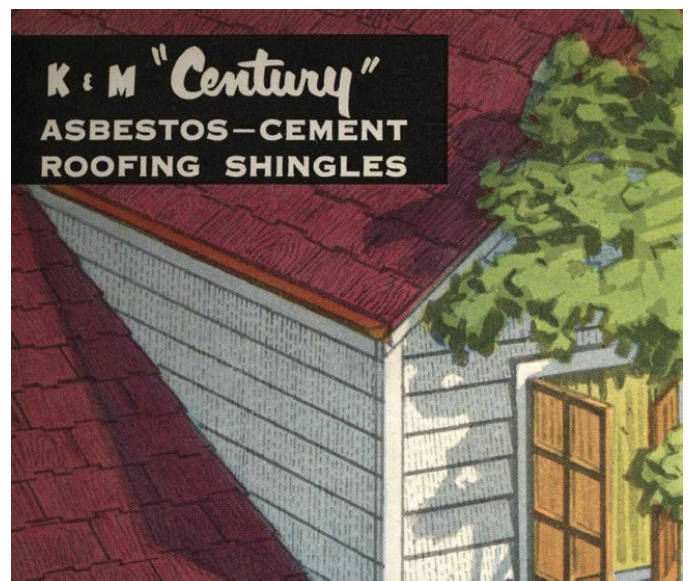


Figure 4. While occasionally used to imitate other materials such as wood or slate shingle, many asbestos shingles and siding materials had their own distinct shape and profile. No longer manufactured today, alternative materials must be found to replace these materials when they are distinctive features on a historic structure. Drawing: Association for Preservation Technology, Building Technology Heritage Library.



Figure 5. (Left) Asbestos shingles were often used as a substitute for traditional slate roof shingles. The historic asbestos roof on this rehabilitation project had reached the end of its lifespan and required complete replacement. (Right) Given the limited replacement materials available to match the historic asbestos shingles, utilizing natural slate was determined to be the best visual match for the original shingles and design intent in this instance. Photos: Crosskey Architects.

Circumstances in which the use of substitute materials may generally be considered appropriate, taking into consideration technical and economic feasibility reasons, include: the unavailability of historic materials; the unavailability of skilled artisans or historic craft techniques; inadequate durability of the original materials; the replacement of a secondary feature; construction of a new addition; the reconstruction of a missing feature; code-required performance; and for enhanced resilience and sustainability:

- **Unavailability of historic material.** A common reason for using substitute materials is the difficulty in finding a good match using the historic material (particularly a problem for masonry materials where the color and texture are derived from the material itself). This may be due to the actual unavailability of the material or to protracted delivery dates, particularly if the material cannot be sourced domestically. It is not uncommon for a local quarry that is no longer in operation to have been the source of an original stone. If another quarry cannot supply a satisfactory match, a substitute material such as dry-tamp cast stone or textured precast concrete may be an appropriate alternative, if care is taken to ensure that the detail, color, and texture of the original stone are matched. Even when the color is successfully matched, the appearance of a cementitious product may diverge from that of the historic stone as the substitute material ages.

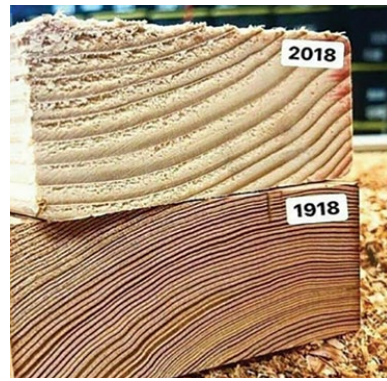
Many manufactured materials that were used historically on buildings are no longer made. Terne-plated steel, which was the material most typically used for painted standing-seam or flat-seam roofing, is no longer made. However, because it was always painted, other metals including galvanized steel or copper can generally be substituted if painted. When the historic material needing to be replaced is a manufactured product developed as an imitation of

a natural material, which was the case with asbestos shingles meant to imitate slate, the natural material may now be an appropriate substitute material to consider for the manufactured one that is no longer produced.

- **Unavailability of skilled artisans or historic craft techniques.** These two issues can complicate any preservation or rehabilitation project. This is particularly true for intricate ornamental work, such as carved wood, carved stone, wrought iron, or cast iron. While skilled craftsmen may not be as difficult to find as they once were, there can still be limitations geographically, even in finding less specialized skills, and particularly if a project is small. Technical advances have allowed some stone or wood carvers to take advantage of computerized equipment, but complex designs will likely still require hand work. It may also be possible to mimic a carved element using a material that can be cast in a mold, adding significant efficiency where an historic element survives from which a mold can be made. Options for casting include aluminum, cast stone, fiberglass, glass fiber reinforced concretes, and terra cotta, but not all carved elements can be duplicated by a casting, and mold-making and casting still require skilled craftsmen.
- **Inadequate durability of the original material.** Some historic building materials were of inherently poor quality or were not durable. In other cases, one material was naturally incompatible with other materials on the building, causing staining or galvanic corrosion. Examples of poor-quality materials are very soft sandstones, which eroded quickly, and brownstone, which is vulnerable to delamination. In some cases, more durable natural stones may be visually similar enough to stand in for these soft stones but cast stone or another material may be needed to achieve an appropriate match.

The ready availability of manufactured ornamental wood features fed a nineteenth-century taste for decorative architectural details that were often used on the exterior of buildings with little concern for how they would be affected by moisture or maintained. Even old-growth wood from decay-resistant species often could not prevent features with severe exposure from eventually needing to be replaced. Today's available commercial supplies of lumber no longer provide the denser, more decay-resistant wood of old-growth forests, so even careful matching to species, which is not always possible, will not yield a replacement equal in performance to the historic material. Old-growth wood is likely to be very expensive, if it can be found, and may not be available from a sustainable, environmentally responsible source. When features with severe exposure need to be replaced or reproduced, substitute materials that are less susceptible to decay can have a longer life, and when the feature is painted, as exterior wood features generally are, the visual effect of a substitute material can be minimal.

- **Replacement of a secondary feature.** When it is necessary to replace a less distinctive, secondary feature that is less important in defining the historic character of the property, there is more flexibility in how it can be replaced. While it may be less important to find an exact match in materials when replacing



*Figure 6. The dramatic difference in the number of growth rings between old-growth wood and wood that was recently harvested from second- or third-growth forests is indicative of the diminished dimensional stability and durability of most lumber currently available. Photo: Zachary Dettmore.*

such a feature, the retention of the overall historic character should still guide selection of an appropriate replacement material. For example, replacing secondary features such as those with limited visibility (e.g., siding materials on a rear elevation) may permit replacement materials that are similar in appearance or character without having to be a perfect match.

- **Construction of a new addition.** The *Standards* require that new additions to historic buildings and related new construction be differentiated from the old as well as be compatible with the historic character of the property and its site and environment. Using materials that evoke, without matching, the historic material can be an effective means of achieving the needed balance between compatibility and



*Figure 7. A new addition replaced non-historic construction on the rear elevation of this building. Fiber cement gives the addition a compatible appearance without replicating the exposure for thickness of the historic siding. Photo: Ward Architecture + Preservation.*

differentiation for new additions and new construction. Even if differentiation is achieved through design rather than materials, there generally is no basis for requiring the use of matching historic materials for new additions and new construction as part of a rehabilitation project.

- **Reconstruction of a missing feature.**

Many buildings lose significant features over the course of their lives for reasons such as those previously discussed. When a missing feature is to be reconstructed, the importance of matching the original material may be less important to the effect replacing the missing feature may have on the overall historic character and appearance of the building. Though replacement of missing features must be substantiated by documentary, physical, or pictorial evidence, in many cases the authenticity of the material may be secondary to the overall visual qualities. The use of a more cost-effective substitute material for the construction of a missing feature can often be an important factor in the feasibility of undertaking such work.

- **Code-required performance.**

Modern building codes are regularly amended to require higher performance levels for new and existing buildings in such areas as life safety, seismic retrofits, and accessibility. Rehabilitation projects often trigger compliance with code requirements that were not in place when a building was constructed. Although building codes may often allow for the retention of historic materials and assemblies, substitute materials can offer an alternative in situations when the historic materials are non-compliant and cannot otherwise be reasonably retained. In these instances, a change in material may be appropriate to meet code requirements, while in other instances selecting the optimal code compliance method for the project may achieve code-compliant solutions that also allow for the preservation of a building's historic materials and finishes.

For example, fire codes may require increased resistance to flame spread for buildings within dense urban environments where building proximity and separation between buildings is a concern. Some substitute materials are non-combustible, have good ratings for flame spread, and can provide an alternative to help meet

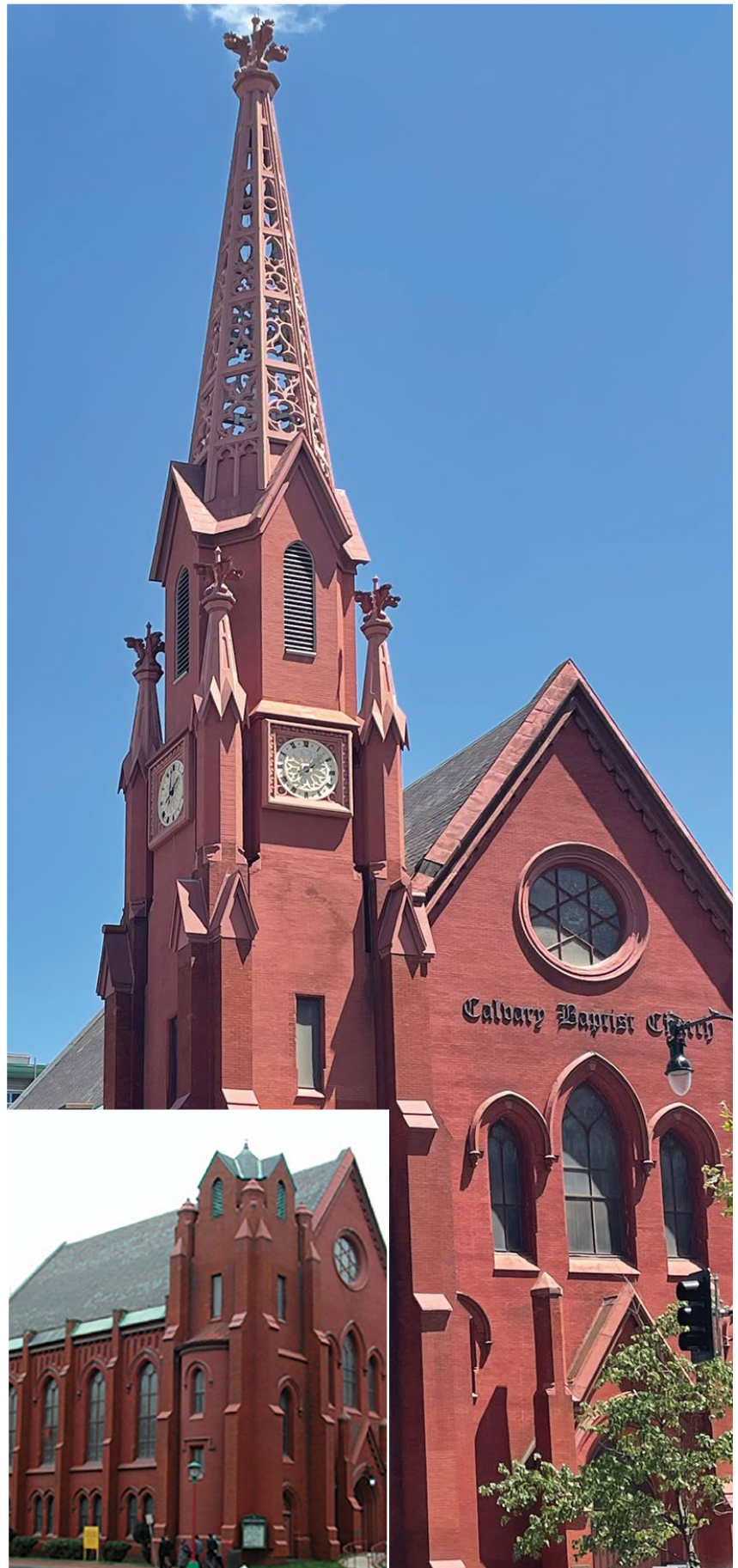


Figure 8. A long-missing cast-iron steeple was reconstructed in aluminum and fiber-reinforced polymer (FRP). Photo: John Sandor, NPS, Inset: Quinn Evans.

fire code requirements. Depending on the building component and the material, however, a substitute material may not resist fire any better than the historic material. In addressing code issues, all feasible alternatives should be considered to minimize the impact on the historic character of the building while still meeting code requirements.

With specific provisions in building code related to issues such as seismic hazards, the choice of materials for features inherently unstable in a seismic event can be a key part of a code-compliant retrofit solution. Elements at risk of falling such as parapets, finials, and overhanging cornices may be made safe by anchoring them to new structural frames. However, for some heavy masonry features, especially where there is deterioration or the feature is difficult to effectively brace, adequately anchoring the existing feature may not prove feasible. In such cases removing and replacing these features with lighter-weight replicas that incorporate a resilient structural framework can help preserve the historic character of the building while improving life safety performance.

- **Enhanced resilience and sustainability.** Wildfires, earthquakes, floods, hurricanes, and other extreme weather events put historic buildings and their occupants at risk and may require adaptive treatments that are more invasive than might be accepted in other circumstances, including related to the use of substitute materials. In these contexts, it is still necessary to try to minimize impacts on a building's historic character as much as possible while still adapting it to be more resilient. Widespread wildfires, for example, have increased demand for fire resistant materials for the exterior building envelope. Flood events may necessitate the replacement of historic materials that have been damaged or inundated with hazardous substances in contaminated floodwaters. When undertaking repairs in such circumstances, substitute materials may offer greater resilience to anticipated future exposure to natural hazard risks.

Similarly, efforts to improve energy efficiency and performance may include the use of substitute materials as replacement components when modifications to building assemblies are required and the historic materials cannot be preserved. When evaluating substitute materials in the context of sustainability objectives, factors such as the environmental impact of production, the full life cycle of products, and the embodied carbon of the materials already in place should be carefully analyzed. There may be more sustainable choices for a replacement material, including the use of more traditional materials in place of manufactured products that may consist of non-renewable resources or hazardous materials. While some synthetic substitute materials are made from recycled materials or are otherwise sustainably produced, many are not repairable, salvageable, or recyclable themselves, and

they may have shorter lifespans to their historic material counterparts. When either greater resilience or sustainability is a factor, all feasible alternatives should be considered in finding a balanced approach that maintains historic character while meeting resilience and sustainability goals.

## Substitute Materials and Economic Feasibility

Economic feasibility is inevitably a concern when choosing a material for any part of a project, whether a historic or substitute material, but it should not be the sole determinant factor at the expense of maintaining the



*Figure 9. Previously bricked-in openings below the flood line were reopened and new aluminum windows installed with cellular PVC trim detailed to hold back moderate flood waters and survive exposure to water. Photo: John Sandor, NPS.*

historic character and historic integrity of a building. Other factors may prompt the consideration of a substitute material, such as the cost of maintaining the historic material, because it is comparatively difficult or costly to reach or access, or the frequency of required maintenance the historic material needs. Additionally, where in-kind replacement material is found to be prohibitively expensive, it may be reasonable to consider a substitute that offers an alternative and is a good physical and visual match. Not all substitute materials are, however, cost-effective replacements. Long-term durability and maintainability are other factors that should be considered in conjunction with initial cost.

Maintenance of a material, particularly where accessibility is difficult or expensive, can be an important part of a

cost evaluation. Maintenance costs should not be considered without also considering life-cycle expenses. While some substitute materials may offer reduced initial costs, they may be as or more costly than traditional materials to maintain over time. For example, many substitute materials are not readily repairable, necessitating full replacement when damaged. The cost to replace a material or assembly at the end of its lifespan may also be greater than the accumulated incremental expense to maintain the historic material, particularly if it is a more traditional, repairable material. Maintenance cost should never be the sole reason for replacing a historic material that is not deteriorated.

## Criteria for the Appropriate Use of Substitute Materials

Substitute materials must meet three basic criteria to be considered: they must be compatible with the historic materials in appearance; their physical properties must be similar to those of the historic materials, or the materials must be installed in a manner that tolerates differences; and they must meet certain basic performance expectations over an extended period of time.

- **Matching the Appearance of the Historic Material**

Any material's appearance varies depending on the nature of the material and how it is used. Some historic materials, such as wood and ferrous metals, were typically painted, making the color of the substitute unimportant, though the texture of the surface, which telegraphs through a paint layer, is still an important consideration. Texture can be a large part of distinguishing a material formed by hand from one that is machine-made. Many historic materials, such as most building stones, are used without any coating, making the color, pattern, and reflectivity, as well as surface texture, dependent on the material itself. Matching the color and surface

characteristics of a historic natural material with a man-made substitute can often be quite difficult.

When the color and surface characteristics of an existing material are important, cleaning the material should be the starting point for evaluating a potential matching material. In situations where there are subtle variations in color and texture within the original material, the substitute material should be similarly varied so that it is not conspicuous by its uniformity. If a material is custom fabricated, a sufficient number of samples should be supplied to permit on-site comparison of color, texture, detailing, and other critical visual qualities. For a manufactured product with preset choices of color or texture, it may be necessary to look at samples from more than one manufacturer to find the best match. Similarly, prefabricated products, such as roofing slate, may offer limited, if any, choice of unit size, which can be a critical factor for achieving a good match. A substitute material should not be used to replace distinctive, character-defining materials and features if an adequate match in design and appearance is not possible.

As all exposed materials are subject to ultraviolet degradation, samples of a new material, particularly when custom formulated, should be prepared during the early planning phases to allow for evaluation of the effects of weathering on color stability. When that is not possible, or if a prefabricated product is used, the fabricator or manufacturer may be able to identify regional locations where equivalent products have been installed long enough ago to get a better sense of how the material weathers and performs.

While a perfect match is the desired goal for replacing distinctive features, it is not always possible, even when the same matching material is chosen for the replacement. When any compromise



*Figure 10. Polymer slates offer a choice of shapes but not sizes, limiting their ability to achieve a good visual match for some historic slate. With the size of the polymer slates (right) being nearly twice that of the historic slates (left), the scale of the entire feature is incompatibly altered. The molded edges of this material, which contribute to its ability to replicate slate, would be lost if each shingle was resized by cutting. Photo: John Sandor, NPS.*



Figure 11. The thickness of the wood siding on the front (left) creates a deeper shadow line than is achieved with the fiber cement siding used on the side (right) elevation. While the exposure can be adjusted, fiber cement siding is not available in a matching thickness. Photo: John Sandor, NPS.

must be made in the precision of the match, it is wise to consider the vantage point from which the material will be seen. Sometimes what seems important at close range, such as variations in the texture of a surface, may be secondary to other aspects of the material when viewed from some distance. The closer a feature is to the viewer, the more closely the material and craftsmanship should match the original. An on-site mock-up using a sample of the proposed material can help evaluate whether it is an adequate visual match.

- **Matching the Physical Properties of the Historic Material**

Carefully chosen substitute materials can often closely match the appearance of historic materials, but their physical properties may differ greatly. These differences are most critical when incrementally replacing components of a larger assembly that retains significant historic material. The chemical composition of the material (e.g., the presence of acids, alkalis, salts, or metals) should be evaluated to ensure that the replacement materials will be compatible with the adjacent historic materials. Materials that will cause galvanic corrosion or other chemical reactions must be isolated from one another.

The thermal- and moisture-driven expansion and contraction coefficients of each adjacent material must be within narrow limits or be accommodated



Figure 12. Cellulose composite materials, like wood, expand and contract with moisture. Here it was used to reconstruct a missing storefront. Unlike solid wood that is dimensionally stable parallel to the grain, this composite moves equally in all dimensions, resulting in gaps that were not adequately anticipated in the design. Photo: John Sandor, NPS.

by carefully designed joints and fasteners. Joints can play a role both in accommodating movement of materials as well as in managing moisture, either to keep it from entering the enclosure assembly or to let it escape from the building envelope, or both. Because some synthetic materials are less permeable to moisture than more traditional materials, installations must take into account the potential to trap moisture and cause deterioration of historic and new materials. An assembly incorporating new and historic materials should be designed so that if material failures occur, the failures occur within the new material rather than the historic one.

During installation, surface preparation is critical to ensure proper attachment. Deteriorated underlying material must be removed or stabilized. Non-corrosive anchoring devices or fasteners that are designed to carry the new material and to withstand wind, rain, snow, and other destructive elements should be used. Since physical failures often result from poor anchorage or improper installation techniques, a structural engineer should be included in planning any major project. For readily available, off-the-shelf materials, manufacturers' recommendations for attachment and spacing should be followed.

Nearly all substitute materials have some properties that are different from the historic materials they may replace. Even when substitute materials are isolated from historic materials and features, it is important to understand the substitute materials' properties in order to use them successfully.

- **Performance of the Material Over Time**

When more traditional materials are used to replace damaged historic materials and features, their performance is predictable in most cases. An exception may be modern wood that has durability and other prop-

erties different than those of historic wood from old-growth forests. Many of the materials used as substitutes have been in use long enough to provide some idea of how they perform over time. Other material may only have test results from accelerated weathering. The length of manufacturer warranties may be an indicator of expected durability and lifespan. Warranties only predict a manufacturer's expectation of a product's performance and are no guarantee that the manufacturers will still be in business at the time needed to stand behind them. Just as new manufacturers emerge with new materials, others disappear. Where possible, projects involving substitute materials in similar installations and exposures should be examined before selecting a new, less-tested material. It is unrealistic to expect a substitute material, which can be quite different in composition than the historic material, not to age differently.

Even traditional materials will not perform well if not used or detailed appropriately, and experienced architects, engineers, fabricators, and installers rely on their professional knowledge and experience to ensure proper installation and techniques when working with familiar materials. This is just one of many reasons that using the original materials for needed replacement is usually the best choice. Some of the materials now available as substitutes have properties that differ greatly from the traditional materials they may be used to replace. It is critical to the successful performance of substitute materials that everyone involved in the selection, design, and installation fully understands the material's properties, especially how it is different than the material it is replacing, and how that will affect the surrounding materials and building systems.

Many traditional building materials can be repaired either with traditional methods and materials or with more modern conservation techniques using substances like epoxies. However, many modern substitute materials (particularly synthetic ones) are not as easily repaired, if repairable at all, as their more traditional counterparts. Confirming that a material is repairable may be important for those used, e.g., where impact or significant wear or abrasion is likely.

Finally, it is critical that the substitute materials be documented as part of the historical record of the building so that proper care and maintenance of all of the building materials continue, ensuring the continued life of the historic building.

## Choosing an Appropriate Substitute Material

Once all reasonable options for repair and replacement in kind have been considered and sufficient justification for substitute materials has been established, the choice among the variety of substitute materials currently available must be made. Rapidly developing technologies allow a wide variety of materials to choose from that are intended to mimic historic materials. Many of the materials that were historically used as substitutes for more traditional historic materials have themselves become historic, and some of these early substitutes continue to be reasonable options as substitute materials today. No substitute material will exactly match the historic material in all aspects, but many are able to adequately match the appearance and relevant physical attributes to make for a potential substitute. If a substitute material is not

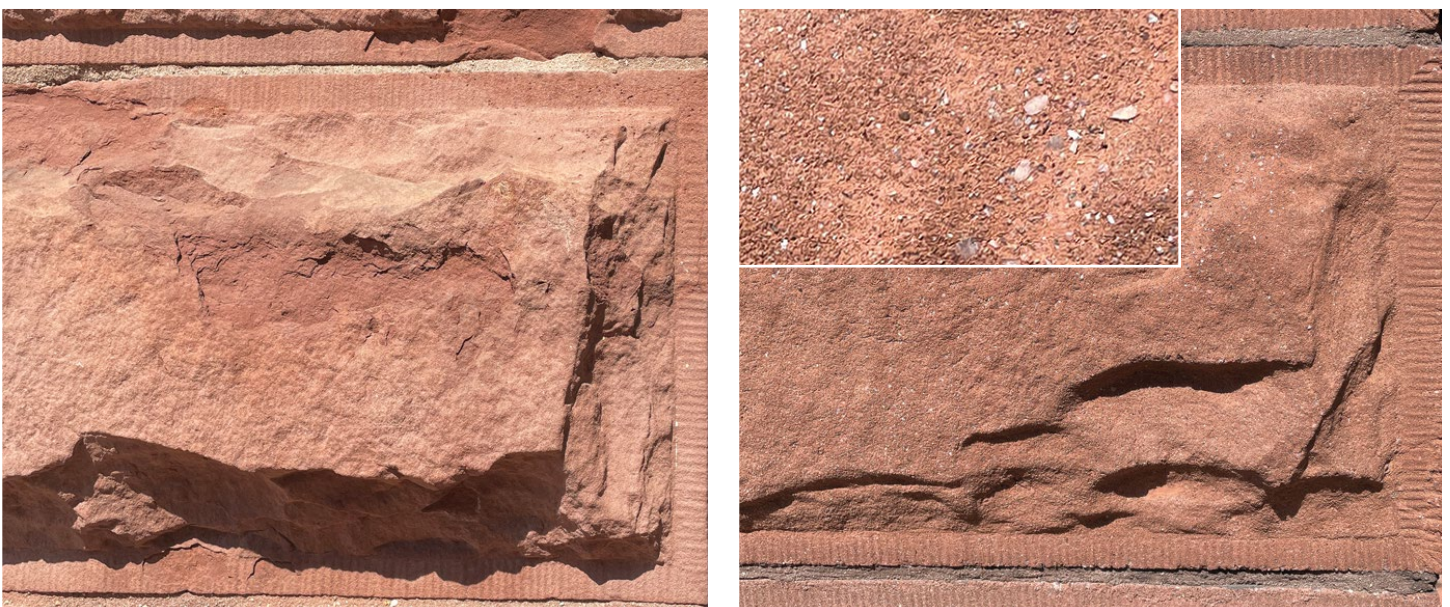


Figure 13. Cast stone was used to effectively replace individual blocks of sandstone. Both the original (left) and the substitute material (right) retain similar physical and visible properties. Having weathered for over 30 years, some erosion of the binder has revealed quartz grains of the aggregate (inset), but it is only noticeable upon close inspection. Photo: John Sandor, NPS.

an adequate physical and visual match given the specific conditions of the building and the project, then it should not be used to replace distinctive, character-defining materials and features.

Listed below are various building components or features and the substitute materials which may, in some circumstances, be considered for use as possible replacement materials in a historic rehabilitation project consistent with the *Standards for Rehabilitation*. This list includes different substitute material options available today for these building features and poses questions that should be asked and considered when choosing between the original material and various types of substitute materials. This is followed by a list of some of the more commonly used, currently available materials that may have some applications as substitute materials and the properties of each that affect their suitability for use as substitutes. This list should not be read as an endorsement of any of these materials, generally, or their appropriateness for use as a substitute material, but it serves as a reminder that the successful use of any building material requires a careful consideration of its properties relative to where and how it will be used.

## Considering Substitute Materials

Considering the use of a substitute material should begin with the following questions about the conditions and location where it will be used:

- Will the significance or visibility of the historic feature require a very precise match?
- Is the entire feature being replaced or just a component of it?
- Are pre-existing conditions contributing to the failure of the existing material, and, if so, how will they be addressed/corrected?
- Is the need for replacement due to inherent deficiencies of the original material?
- Will the material need to resist any environmental hazards such as flooding or fire?

## Historic Features and Substitute Materials

### Historic Building Features

	Masonry Stone, terra cotta	Architectural Metals Cast & wrought iron, steel, pressed metal	Siding Wood, asbestos	Roofing Wood shingle, slate, tile	Decking Tongue-and-groove & square-edge wood	Molding / Trim Wood
Aluminum	●	●	●			●
Cast Stone & Precast Concrete	●			●		
Fiber Reinforced Concretes	●					
Glass Fiber Reinforced Polymers	●	●				
Fiber Cement			●	●		●
Mineral / Polymer Composite			●	●	●	●
Cellulose Fiber / Polymer Composite			●	●	●	●
Non-composite Polymers		●			●	●
Cellular PVC			●		●	●

Potential Substitute Materials

The above chart lists materials that are sometimes used as substitutes for replacement of historic building features. Even within a given category, all materials may not be equally suitable as a substitute replacement material for the actual historic material or feature. Any substitute material should be selected based on its specific physical and visual characteristics, conditions, and intended application consistent with the Secretary of the Interior's Standards for Rehabilitation.

# Historic Building Features: Criteria for selecting an appropriate replacement material

## Masonry

**FEATURES:** corbels, brackets, balusters, cornices, window and door surrounds, friezes, wall surfaces, horizontal surfaces, incidental ornament, columns

**HISTORIC MATERIALS:** terra cotta, cast stone, stone, concrete

**POTENTIAL SUBSTITUTES:** cast stone, pre-cast concrete, GFRC, GFRP, non-composite polymers (polyurethane), cast or stamped metal

### Questions to ask about the replacement material:

- Can it serve a structural function?
- How is the material affected by moisture?
- Can the material survive flooding and be reused?
- Can it reproduce the surface texture of the original?
- Is its shrinkage in curing low enough to allow it to be molded from existing stones?
- Can matching color be achieved without a coating and with UV stability?
- Can an adequate match of the surface (color and texture) be achieved with a coating?
- Is a coating required?
- If it is not self-supporting, is it lightweight enough to be supported by an underlying framework?
- Can multiple original units be replicated with a single replacement piece?
- Where thermal movement is different from the original material, how will joints accommodate?
- Is the material combustible?

## Architectural Metals

**FEATURES:** pilasters, door and window surrounds, cornices, incidental ornament, columns, spandrels, ceilings, sheathing, roofing

**HISTORIC MATERIALS:** cast and wrought iron, steel, bronze, lead, aluminum, and stamped steel (usually galvanized or terne-coated)

**POTENTIAL SUBSTITUTES:** GFRP, aluminum, non-composite polymer (polyurethane), GFRC, metallic/polymer composite

### Questions to ask about the replacement material:

- Will the replacement material serve a structural or cosmetic role?
- Will it expand and contract with temperature change enough to require special accommodation in its installation?
- If part of an assembly of mixed materials, how will any expansion and contraction of the dissimilar materials be accommodated?
- Will the replacement material increase deterioration of the historic or surrounding elements, for instance due to galvanic corrosion, moisture entrapment, jacking of original material, off-gassing creating a corrosive environment, or poor original design of the historic material?
- How will the replacement material mimic the surface color/patination of the original material?
- If a coating is needed, what preparation is needed, and what is its durability or service life of the finish?
- What attachment and support systems are necessary?
- If the original element is structural, but the new material is not, how can supplemental structure be introduced to support the new?



Figure 14. Surface texture is an important aspect in matching the appearance of a historic material, especially when a material is viewed at close range. As seen in these two images, many of the substitute materials produced for siding and trim have an embossed wood grain, making them incompatible for replacing historic wood that was typically planed to a smooth surface. Some substitute products are available with a smooth surface as well. Photos: John Sandor, NPS.

## Siding

**FEATURES:** clapboard, tongue-and-groove or shiplap siding, board and batten, shingles

**HISTORIC MATERIALS:** wood and asbestos

**POTENTIAL SUBSTITUTES:** cellular PVC, wood fiber/polymer composite, fiber cement, mineral/polymer composite

### Questions to ask about the replacement material:

- What are the widths, lengths, profiles, thicknesses, and textures available?
- What, if any, are the finishing requirements, and/or is it available factory-finished?
- How well does it hold paint, and can prefinished surfaces be renewed?
- What tools are needed to cut it, and can it be machined?
- Does it absorb moisture and, if so, to what effect?
- Can the material survive flooding and be reused?
- Will it expand and contract with temperature change enough to require special accommodation in its installation?
- What characteristics can affect its handling (e.g., weight, flexibility, brittleness)?
- Does it have specific fastening requirements?
- Is it susceptible to insect damage?
- What is its impact resistance?
- Does it have a flame spread rating?
- What is the expected lifespan and/or warranty?

## Roofing

**HISTORIC MATERIALS:** wood shingle, slate shingle, asbestos shingle, clay tile, concrete tile, metal

**POTENTIAL SUBSTITUTES:** fiber cement, mineral/polymer composite, wood fiber/polymer composite, pre-cast concrete, metal

### Questions to ask about the replacement material:

- What sizes and shapes are available?
- What are color choices?
- What is the color stability of the new material, and how will it age/weather?
- What is the impact resistance?
- What is its flame spread rating?
- What are the installation requirements of the new material?
- Can the feature being replaced be custom-produced if ready-made ones of the new material are not an accurate match?
- What is the expected lifespan and/or warranty?

## Decking

**FEATURES:** tongue-and-groove, square-edge flooring

**HISTORIC MATERIALS:** wood

**POTENTIAL SUBSTITUTES:** cellular PVC, wood fiber/polymer composite, mineral/polymer composite, non-composite polymers (solid PVC)

### Questions to ask about the replacement material:

- What are the widths, lengths, and textures available?
- Is it site painted or prefinished?
- How well does it hold paint, and can prefinished surfaces be renewed?
- What tools are needed to cut it, and can it be machined?
- What dimensional span does its strength allow?
- Does it absorb water, and if so, to what effect?
- Can the material survive flooding and be reused?
- Does it require a drainage plane, or can it be installed atop a membrane?
- Will it expand and contract with temperature change enough to require special accommodation in its installation?
- Is it susceptible to insect damage?
- Is it impact resistant?
- Does it have a flame spread rating?
- What is the expected lifespan and/or warranty?

## Molding / Trim

**FEATURES:** run moldings, flat boards, casings, cornice, frieze, railings, balustrade, columns

**HISTORIC MATERIALS:** wood, metal

**POTENTIAL SUBSTITUTES:** cellular PVC, wood fiber/polymer composite, mineral/polymer composite, non-composite polymer (polyurethane), GFRP, sheet metal

### Questions to ask about the replacement material:

- What are the widths, lengths, and textures available?
- What, if any, are the finishing requirements and/or is it available factory-finished?
- How well does it hold paint, and can prefinished surfaces be renewed?
- What tools are needed to cut it, and can it be machined?
- Does it absorb moisture, and if so, to what effect?
- Can the material survive flooding and be reused?
- Will it expand and contract with temperature change enough to require special accommodation in its installation?
- What characteristics can affect its handling (e.g., weight, flexibility, brittleness)?
- Does it have specific fastening requirements?
- Is it susceptible to insect damage?
- What is its impact resistance?
- Does it have a flame spread rating?
- What is the expected lifespan and/or warranty?



*Figure 15. Tongue-and-groove porch flooring is manufactured in several different substitute materials. Each type has different properties, though most are more moisture-resistant than wood. The prefinished product shown can be painted when worn, but repainting is not recommended for some product choices. Photo: Oak Alley Foundation.*

# Potential Substitute Materials: Matching properties and performance needs

## Physical Composition and Properties

After assessing different material options based on the intended application, the appropriateness of a substitute material should also be considered in context of the material's physical composition, associated properties, and necessary visual match.

### Aluminum

**MATERIAL:** Aluminum is a highly corrosion-resistant alloy that can be cast, wrought, or extruded. Molten aluminum is cast into permanent (metal) molds or one-time sand molds forming cast aluminum. Extruded aluminum is formed by passing heated aluminum through a die which produces the desired form. Wrought aluminum is worked using the heated metal and then bending, stamping, and otherwise shaping the metal. If not self-supporting, aluminum elements are generally screwed or bolted to a structural frame. Aluminum can be welded, but more often sections, particularly extruded ones, are mechanically connected.

**PROPERTIES:**

- Isotropic
- Lightweight
- Thermal movement greater than cast iron or wood
- Corrosion-resistant, but direct contact with other metals may trigger galvanic corrosion
- Lower structural strength than iron or steel
- Ductile - less brittle than cast iron
- Non-combustible
- Retains high definition through molding process and produces crisp profiles through extrusion
- Can be given a durable metallic finish through anodization. Surface etching required for paint adhesion
- Can be machined into a large variety of shapes/ dimensions



*Figure 16. Aluminum is a highly corrosion-resistant metal that is commonly used as a substitute material for cast iron. Aluminum can be a more affordable and lightweight alternative to cast iron that retains a similar texture, shape, and maintenance cycle. Photo: NPS.*



*Figure 17. The balustrade consists of multiple prior campaigns of using cast stone to replace the natural stone. The effective match for the surface texture and color of the original stone allowed individual elements to be incrementally replaced only when they had failed, thus retaining the maximum amount of original material as long as possible. Photo: EverGreene Architectural Arts.*

## Cast Stone & Precast Concrete

**MATERIAL:** A cement lime and aggregate mixture that is dry-tamped into a mold is generally referred to as cast stone. Cast stone is one of the original substitute materials. Its longevity has proved that the material ages compatibly with stone. A wet mix of cement and aggregate poured into molds also has a long history of being used to produce concrete masonry units mimicking stone and roofing tiles mimicking clay tile. Both methods have minimal shrinkage during curing, though they employ different curing and finishing techniques. Both can include reinforcing bars and anchorage devices installed during fabrication. The dry-tamp fabrication method is especially effective at producing an outer surface with the appearance of stone.

### PROPERTIES:

- Isotropic
- Weight equivalent to stone
- Expansion/contraction similar to stone
- Water absorption may differ from that of any particular stone
- Can be structural
- Non-combustible
- Vapor-permeable
- May achieve a wide range of color and surface textures by varying mix, but use of pigments may reduce UV stability
- Can be coated
- May be tooled to match the appearance of tooled stone
- Repairs similarly to stone



*Figure 18. Missing historic terra cotta spandrel panels on all floor levels were recreated utilizing glass fiber reinforced concrete (GFRC) replacements. New spandrels were fabricated as individual components and attached with metal terra clips between historic terra cotta piers. Photo: Kris Frail, Dewberry.*

## Fiber Reinforced Concretes (GFRC, CFRC)

**MATERIAL:** Fiber reinforced concretes are lightweight concrete compounds modified with additives and reinforced with alkaline resistant glass fibers (GFRC), or less frequently carbon fibers (CFRC). They are generally fabricated as thin-shelled panels and applied to a separate structural frame or anchorage system. GFRC is typically sprayed into forms, although it can be poured, and anchoring devices are included in the fabrication. The color is derived from the natural aggregates and, if necessary, a small percentage of added pigments. Because of its low shrinkage in curing, it can be produced using molds taken directly from the building.

### PROPERTIES:

- Isotropic
- Lighter weight than solid masonry
- Expansion/contraction similar to stone
- No load bearing capacity, so underlying framework must be used to accommodate any loads
- Material can be fire-rated
- Vapor-permeable
- Can be produced in larger sections efficiently reproducing repetitive elements or features that were originally made up of small individual units
- Large range of colors achievable by varying aggregates, but when pigments are needed UV stability may be reduced
- May be left uncoated or may be painted



Figure 19. A new, lightweight fiber reinforced polymer is attached to a new metal armature to replicate damaged and missing elements of a terra cotta cornice. Photo: Quinn Evans.

## Glass Fiber Reinforced Polymers (FRP, Fiberglass)

**MATERIAL:** Fiberglass is the most well-known of the FRP products generally produced as a thin, rigid, laminate shell formed by pouring a polyester or epoxy resin gelcoat into a mold. When tack-free, layers of chopped glass or glass fabric are added along with additional resins. The surface gel coat can be pigmented or painted. Reinforcing rods and attachment devices can be added when necessary. Because of its low shrinkage in curing, it can be produced using molds taken directly from the building. Rather than being produced as standard components, FRP is custom fabricated for individual applications.

### PROPERTIES

- Isotropic
- Lighter weight than masonry, similar to sheet metal
- More thermally driven expansion than masonry or metals
- No load bearing capacity, so underlying framework must be used to accommodate any loads
- High strength to weight ratio
- Flammable
- Not vapor-permeable
- Can be produced in larger sections efficiently reproducing repetitive elements or features that were originally made up of small individual units
- May be difficult to match false joints in multi-unit assemblies to actual joints that need to accommodate movement
- Color can be incorporated into the surface gel-coat, or the surface may be coated



Figure 20. Cement board was used to replace a non-historic infill and mimics the configuration of a typical vehicular door of the period.  
Photos: Historic Augusta.

## Fiber Cement

**MATERIAL:** Fiber cement products are made from fiber, sand that is ground to a powder, cement, and proprietary additives to reduce moisture absorption. The fiber used in roof products is glass fiber alone, whereas siding and trim board products are primarily wood fiber. The material is formed with a smooth or textured surface, cut to standard sizes of panels, boards, or shingles, and cured in an autoclave. Roofing material has integral color, but board and siding products are produced with a primer, if not fully factory finished. Most siding and trim boards are embossed with a wood grain on one surface and are smooth on the other, the smooth side being the appropriate surface to imitate planed wood.

### PROPERTIES:

- Products are minimally orthotropic
- Heavier and more brittle than wood, limiting available lengths
- Very little thermal- and no moisture-driven movement
- Low water absorption, but not recommended for ground or roof contact
- Class A flame spread
- Resists insect damage
- Available in limited thicknesses and widths
- Not machinable, but may be cut with special carbide blades; cutting requires dust collection and personal protective equipment
- Cut edges require sealing
- Available unfinished, primed, or prefinished, and must be painted (with latex paint)
- 15-year limited warranty typical



*Figure 21. A mineral polymer composite siding was available in the profile very similar to the historic siding. The replacement siding was used where the original material was almost completely missing beneath a more modern covering. Areas where the original wood was largely intact were replaced with matching wood to sustain more of the material integrity of the building. Photo: Belk Architecture.*

## Mineral / Polymer Composite

**MATERIAL:** Calcium carbonate or fly ash are mineral ingredients held in a matrix of various polymers to produce materials formed or molded into a number of building products. Additives found in some of the roofing products include pigments and UV stabilizers. Some use a substantial portion of recycled material. Different combinations yield products with different properties, each formulated for a specific building component. When the material is fly ash with some glass fibers bound in a matrix of polyurethane, it is identified as polyash. Siding, trim, bead board, and deck products are primed or prefinished, whereas roof products have integral color.

**PROPERTIES:**

**Fly ash (siding and trim)**

- Isotropic
- Heavier and more brittle than wood, and lacking structural capacity
- Little thermal or moisture-driven movement
- Sufficiently low water absorption to permit ground contact
- Class C flame spread
- Resists insect damage
- Available in limited thicknesses and widths
- Machinable with carbide tools blades; requires dust collection
- Cut edges do not require sealing

- Must be painted
- 30-year limited warranty typical

**Calcium carbonate or recycled rubber (roofing)**

- Isotropic
- More thermally-driven movement than slate or wood
- Little to no moisture absorption
- As shingles: lighter and more flexible than slate
- As tongue-and-groove decking: heavier and harder than wood
- Not vulnerable to insect damage
- Available in limited dimensions
- As shingles: Class 4 impact resistance, and flame spread ratings ranging from Class A to Class C depending on the specific product
- As shingles: integral color, that may be subject to fading
- As tongue-and-groove decking: prefinished with non-renewable finish, and can be cut with woodworking tools
- 50-year limited warranties on roofing products typical

## Cellulose Fiber / Polymer Composite

**MATERIAL:** Wood strands or fibers are coated with resin for moisture resistance and zinc-borate for insect and fungal-decay resistance, then consolidated under heated pressure. Solid composite core boards are cut from sheets of material, then factory-primed or finished. Resulting siding and trim board products can be referred to as engineered wood, fiber board, or hardboard. Products may be embossed with a wood grain or have a smooth finish, the smooth side being the appropriate surface to imitate planed wood. Siding, trim, and tongue-and-groove decking with a slightly different properties are produced by extruding polyvinyl chloride (PVC) combined with non-wood cellulose. Roofing shingles are molded from fine wood fibers, color additives, and UV stabilizers bound with polypropylene or polyethylene (thermoplastics).

### PROPERTIES:

#### Predominantly Cellulose (siding, trim and decking)

- Minimal thermal movement
- Resistant to moisture-driven movement
- Lighter and more flexible than solid wood, but lacks structural capacity
- Rice hull cellulose: can span typical floor-framing spacing as decking
- Low water absorption (for wood, no ground or roof contact)
- Class A or Class C flame spread
- Resists insect damage
- Available in limited dimensions
- Machinable with woodworking tools
- Wood cellulose: Cut edges must be sealed and may need additional surface prep for finish; must be painted if unfinished or primed, also available prefinished
- Rice hull cellulose: Accepts stain/paint, but no finish required
- 30–50 year limited warranty, depending on manufacturer

#### Predominantly Polymer (roofing)

- Minimal thermal movement
- Little to no moisture absorption
- Lighter and more flexible than slate
- Class 4 impact-resistance
- Class A flame spread
- Available in limited shingle size
- 50-year limited warranty typical



*Figure 22. A porch was reconstructed using posts fabricated on site from a smooth-surface cellulose/polymer composite material. Though the face of the posts are painted, the lack of paint on the bottom at the cut ends is not consistent with manufacturers' recommendations. This treatment will allow moisture to be absorbed, shortening the life of the new replacement feature. Photo: John Sandor, NPS.*



Figure 23. 3-D printing using various polymers is occasionally used to replicate missing metal or wood features. This new application is continually being refined, but the application can be successful when a painted, lightweight feature needs to be replicated. Photo: NPS.

## Non-composite Polymers

**MATERIALS:** The main two polymer materials used without significant other components are polyurethane and polyvinyl chloride (PVC). Polyurethane millwork is constructed of urethane foam created by mixing isocyanate and resin. The polyurethane mixture is kept under pressure in a mold as it expands to any desired shape. These molded products have a closed-cell, foamed core with a denser surface skin. Polyurethane products can have exterior applications but are more often used for interior features. Polyvinyl chloride (PVC) in a solid extruded form is another polymer that can have architectural application as tongue-and-groove decking. Various polymers formed using 3-D printing are also being explored as replacements for painted metal or wood ornamental features.

**PROPERTIES:** Each of the two groupings has distinct physical properties

### Urethane Foam (moldings and decorative elements)

- Lightweight and flexible, but lacking structural capacity
- More thermally-driven movement than wood or stone, but less than cellular PVC
- Does not absorb water
- Flammable
- Resists insect damage
- Can be cut with standard woodworking tools
- Adhesive and mechanical fasteners both recommended for installation

- Supplied primed and must be painted (latex paint)
- Lifetime limited warranty typical

### Solid PVC (flooring)

- Isotropic
- Heavier and less flexible than wood
- Minimal thermal movement
- Does not absorb water
- Strength to span typical floor-framing spacing
- Impact-resistance greater than wood
- Class A flame spread
- No insect susceptibility
- Good paint adhesion, but also available prefinished
- 20-year warranty typical

## Cellular Polyvinyl Chloride (PVC)

**MATERIAL:** Varying amounts of calcium carbonate and a foaming agent are added to melted PVC before passing through an injection die and then a calibrator to produce the shape and size of the finished product. Cellular PVC is produced as sheets, boards, and moldings. Differences in the specifics of the equipment and the rate of cooling create two varieties of product, with distinct properties. One is known as free-foam, having a fairly consistent structure throughout its section, and the other is identified as Celuka, having a skin that is denser than its core. This primarily affects the ease with which the product can be milled and shaped. The material is white and needs no applied finish. When produced for decking the material has a colored and textured wear layer over the PVC core.

### PROPERTIES

- Isotropic
- Lighter and more flexible than wood
- Less strong than wood (in tension and shear), but can span typical floor- framing spacing as decking
- More impact-resistance than wood
- Negligible water absorption; no moisture-driven movement, unlike wood
- Subject to thermal expansion and contraction significantly greater than wood, though the thermal movement is less for the same dimension than the cross-grain moisture-driven movement of wood

- For longer pieces, thermal movement requires manufacturer's specifications to be followed for attachment, and inclusion of expansion joints when installed at low temperature (joints should be glued)
- Class A flame spread
- Resists insect damage
- Machinable with woodworking tools, though cut edges may need additional surface prep for finish
- Good paint adhesion; if painted, high light reflectance (HLV) is recommended to minimize heat driven expansion
- 25–30-year limited warranty, depending on manufacturer



*Figure 24. Cellular PVC when painted can be used to replace deteriorated wood features. This beadboard set in a wood frame was not historically designed to shed water effectively and had deteriorated. Cellular PVC was able to match the appearance of the wood details, while its properties were well matched to the shady location, painted finish, and limited size and configuration within the overall assembly; thus, it should provide a long-lasting solution for this application. Photo: Jennifer Balson Alvarez, NPS.*

## Acknowledgements

John Sandor, Architectural Historian, David Trayte, Historical Architect, and Amy Elizabeth Uebel, Architectural Historian, Technical Preservation Services, National Park Service, revised *Preservation Brief 16: The Use of Substitute Materials on Historic Building Exteriors*, originally written by Sharon C. Park, FAIA, FAPT, and published in 1988. The revised Brief contains expanded and updated information as well as new color photographs describing the general issues and application of substitute materials on historic buildings.

The authors wish to thank the following: Peyton Hall, FAIA, Principal Architect Emeritus, Historic Resources Group, Mary Jablonski, President, Jablonski Building Conservation, Inc., Thomas Jester, FAIA, FAPT, LEED AP, Principal, Quinn Evans, Sharon Park, FAIA, FAPT, Associate Director Emerita, Smithsonian Institution, Debra Slaton, Principal, Wiss, Janney, Elstner Associates, Inc., for their guidance and review of this revision; and to Brian Goeken, Chief of Technical Preservation Services, National Park Service, and Jo Ellen Hensley, Elizabeth Tune, and Jennifer Oeschger, Technical Preservation Services, National Park Service, for their help in the editing of the publication. Illustrations not specifically credited are from National Park Service files. Front cover image: Installation of a new roof feature on a ca.1895 commercial building. The dome was constructed of fiber-reinforced polymer to replicate the missing original feature in Aurora, Illinois, 2023. Photo: Kelsey Cozens/JH Real Estate Partners LLC.

This publication has been prepared pursuant to the National Historic Preservation Act of 1966, as amended, which directs the Secretary of the Interior to develop and make available information concerning historic properties. This publication is available from the Technical Preservation Services website at <http://www.nps.gov/tps/> or hard copies may be purchased from the Government Printing Offices at the U.S. Government Bookstore at <https://bookstore.gpo.gov/>. Comments about this publication should be addressed to Technical Preservation Services, National Park Service, 1849 C Street, NW, Mail Stop 7243, Washington, DC 20240, or by email to [NPS\\_TPS@nps.gov](mailto:NPS_TPS@nps.gov).

This publication is not copyrighted and can be reproduced without penalty. Normal procedures for credit to the authors and the National Park Service are appreciated. The photographs used in this publication may not be used to illustrate other publications without permission of the owners.

October 2023